

Shark Force Series

Shark Force 120 ARGB

Performance enhanced 120mm PWM ARGB fan

- Distinctive “Shark Force” fan blade design for lower noise and higher performance
- Wide 0~2,500 RPM speed range via PWM control
- Three-phase, six-pole design which allows for smoother, quieter operation compared to most single-phase, four-pole design. Energy efficiency also improves greatly
- Modular cable design simplifies connection and management of cables
- Utilizes standard ARGB 4-1 pin for compatibility, displays any color combination by use of an addressable RGB controller or capable motherboard
- High airflow with high current and high pressure
- Fluid Dynamic Bearing for long life expectancy



Specifications

Model No.	SST-SF120B-ARGB
Material	Polycarbonate fan blades, PBT frame
Color	Translucent fan blades, black frame
Bearing	Fluid dynamic bearing
Connectors	4 pin PWM connector + 4-1 pin ARGB (5V LED)
Rated Voltage	12V DC
Starting Voltage	5V
Rated Current	Fan: 0.45A LED: 0.36A
Rated Power	Fan: 5.4W LED: 1.8W
Speed	0 ~ 2500 RPM*
Airflow	0 ~ 100 CFM
Static Pressure	0 ~ 4.66mmH ₂ O
Noise Level	0 ~ 41.2 dBA
Dimension	120mm (W) x 25mm (H) x 120mm (D) 4.72" (W) x 0.98" (H) x 4.72" (D)

*The fan-stop function needs to be adjusted in the BIOS to enable it (not all motherboards support fan-stop function) We strongly recommend to set PWM control by temperature mode, as the standby speed noise of the DC mode temperature control preset on the motherboard may make be unsatisfying.



SilverStone distinctive Shark Force technique

Inspired by the hydrodynamic properties of shark skin, Shark Force series fan blades feature similar pattern which passively alters airflow to favorably affect the pressure gradient along fan blades to improve overall airflow performance and noise level





SILVERSTONE

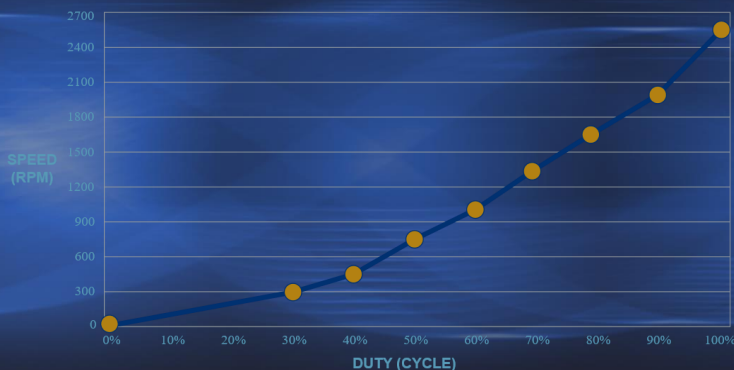
Engineered for a wide array of applications

Shark Force fans are capable of maintaining quietness under light-loading condition, whilst allowing for industrial fan-level top speeds or fan idle operation through an advanced PWM controller. It's almost as if you are getting two fans in one!



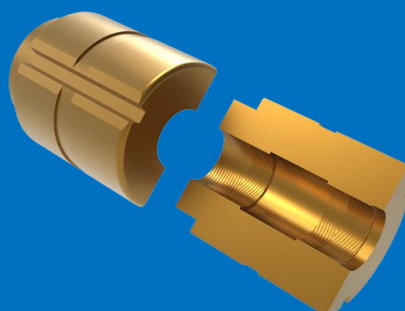
100 CFM

4.66mmH₂O



Unpleasant cable routing, simplified!

Implemented for the first time, a modular cabling design for fan power and ARGB lighting to ease cable management, whilst leaving the option for unplugging and disabling ARGB lighting effects opened



Premium efficiency motor construction

Utilizing three-phase, six-pole motor design, which produces higher torque value compared to most single-phase, four-pole design fans. Combined with Fluid Dynamic Bearing (FDB) for a smooth, reliable and quiet operation