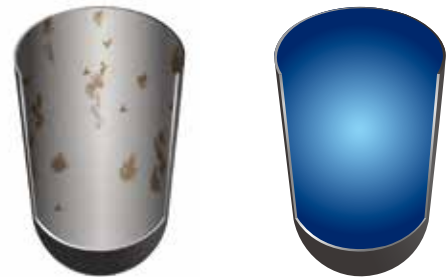


### High Quality Enamel Tank

The tank conforms to the Germany DIN standard, after 160,000 cycles impulse pressure tests.



Non-enamel tank      Haier enamel tank

Compared with Haier enamel tank, non-enamel tank is easy to get corrosion and water leakage.

- ♦ **Material**  
Formed by decarbonized steel and enameled by super fine powder from Europe and USA.
- ♦ **UMC Inner Tank**  
The Ultra Micro Coating sintered at 850°C protects the tank from corrosion, ensuring longer life.

### Magnesium Rod

The magnesium rod, by European technology, extends the tank life up to 40%.



### High Efficiency Heating Element

Incoloy 800 stainless steel heating element, with heating efficiency up to 97.9%.



### Microcellular Polyurethane Foam Technology

With the microcellular polyurethane foam technology, the water heater can save up to 40% energy than the traditional products.



### Shock Proof

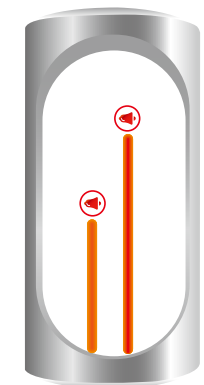
Haier has sold tens of millions of water heaters with "Shock Proof" technology without any electric shock accident.



Patented Shock Proof technology adopted by IEC standard

### Dual Thermostats

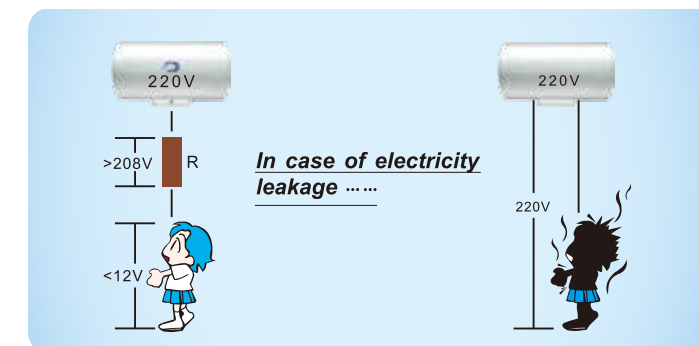
Use two capillary thermostats



- ♦ **Thermal cut-out:**  
Will cut off power in case of over heating.
- ♦ **Thermostat of normal temperature:**  
Will stop the heating once it reaches to the preset temperature.

### Comparison between water heaters with Shock Proof and without Shock Proof

The system plays as a resistor between the water heater and the human body, which reduces the intensity of the current passed, thereby ensuring users' safety.



Water heaters with Shock Proof      Water heaters without Shock Proof

\* In case of normal water heater without Shock Proof, the electric current passed will be very high to result in an accident.



Smart Shower

Users can choose No. of people to have shower, the heating element will heat the water to different temperatures to deliver just enough hot water, which saves time and energy. This also brings a lot of convenience to users as it needs only one press of the button.



Smart Memory

The water heater will restart automatically with previous settings after power resumption. Such function is designed for regions where there is frequent power blackout.



Multiple Power

User can choose different power to shorten the heating time.



Corrosion Proof

High quality glass lined tank enameled at 850°C, protects tank from corrosion by water and big magnesium anode rod against tank corrosion.



Heat Loss Proof

PUF foaming technology has excellent thermo insulation performance to minimize standby heat loss.



Water Proof

All water heaters pass IPX 4 water proof test for using in humid environment, ensuring long lasting use.



Fluctuation Voltage Proof

The digital controller can work in a wide voltage range between 110V to 264V.



8 Bars Rated Pressure

The tank is proved to pass 160,000 cycles impulse pressure test under 10 Bars, to ensure working pressure of 8 Bars.



Incoloy 800 Heating Element

Incoloy 800 stainless steel heating element with high efficiency of 97.9%, maintains best performance under high temperature & pressure conditions.



Shock Proof

Special is structure is designed for regions with electricity problems such as lack of earth wire, wrong wire connections, electricity leakage, to avoid shock accidents.



BPS Mode

By choosing the BPS mode, the water heater will automatically heat up the water in the tank to 80°C to kill the legionella, E coli which might exist in the tank.



Over-heat Proof

Independent thermo cut-out can protect water heater from over heating.



Over-pressure Proof

All water heaters are attached with safety valve for over pressure proof.

F1



50L  
80L  
100L

Q



10L



15L  
30L

A3



30L  
50L  
80L  
100L

Installation Type	Vertical	√	√	√	√
	Horizontal				
	Floor Standing				
Control Method	Mechanical		√	√	√
	Electronic	√			
Eco-Smart	Eco Aqua				
	Smart Shower	√			
	Smart Timer				
	Aquatune				
	Smart Memory	√			
Durable & Reliable	Smart Control				
	Multiple Power	√			
	Corrosion Proof	√	√	√	√
	Heat Lost Proof	√	√	√	√
	Water Proof IPX 4	√	√	√	√
	Fluctuation Voltage Proof	√			
	8 Bars Rated Working Pressure	√	√	√	√
Safe Care	High Efficiency Stainless Steel	√	√	√	√
	Shock Proof	√	√	√	√
	Over-heat Proof	√	√	√	√
	Over-pressure Proof	√	√	√	√
	BPS	√			



Vertical

Electric Water Heater

### ES50/80/100V-F1(R)

Digital control, Vertical installation



Multiple Power



Smart Shower



Smart Memory



Corrosion Proof



Heat Loss Proof



Water Proof



8 Bars Rated Pressure



Incoloy 800 HE



Fluctuation Voltage Proof



Shock Proof



Over-heat Proof



Over-pressure Proof

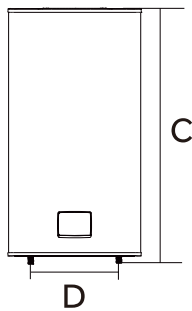


BPS Mode

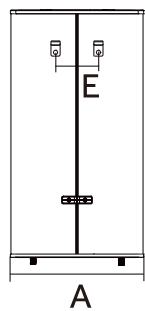


Model	ES50V-F1(R)	ES80V-F1(R)	ES100V-F1(R)
Installation type	Vertical	Vertical	Vertical
Control method	Electronic	Electronic	Electronic
Tank volume (L)	50	80	100
Rated voltage (V) / Frequency (Hz)	220~240/50	220~240/50	220~240/50
Rated power (kW)	3	3	3
Rated temperature (°C)	75	75	75
Rated pressure (Bar)	8	8	8
Tap water pressure (Bar)	≥0.5	≥0.5	≥0.5
Water-proof grade	IPX 4	IPX 4	IPX 4
Product dimensions H/W/D (mm)	720/530/305	1046/530/305	1265/530/305
Packing dimensions H/W/D (mm)	759/582/378	1086/582/378	1302/582/378
Net weight (kg)	25	35.5	39
Gross weight (kg)	28	39	42
Load qty. 40HQ	372	282	252

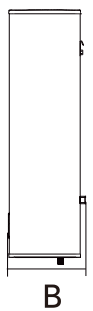
Front view



Rear view



Side view



Model	A	B	C	D	E
ES50V-F1(R)	530	305	720	285	170
ES80V-F1(R)	530	305	1046	608	170
ES100V-F1(R)	530	305	1265	823	170





Cute

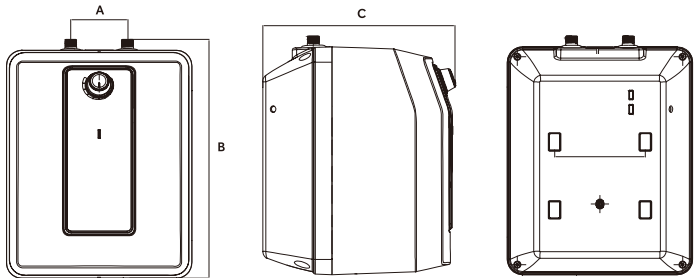
Electric Water Heater

ES15V-Q1/Q2(R)  
ES30V-Q1(R)  
Mechanical control, Vertical installation

- Corrosion Proof
- Heat Loss Proof
- Water Proof
- 8 Bars Rated Pressure
- Incoloy 800 HE
- Shock Proof
- Over-heat Proof
- Over-pressure Proof



Model	ES15V-Q1/Q2(R)	ES30V-Q1(R)
Installation type	Above sink/Under sink	Above sink
Control method	Mechanical	Mechanical
Tank volume (L)	15	30
Rated voltage (V) / Frequence (Hz)	220/50	220/50
Rated power (kW)	2	220/50
Rated temperature (°C)	75	75
Rated pressure (Bar)	8	8
Tap water pressure (Bar)	≥0.5	≥0.5
Water-proof grade	IPX4	IPX4
Product dimensions H/W/D (mm)	403*327*330	454*400*400
Packing dimensions H/W/D (mm)	477*383*388	536*457*457
Net weight (kg)	11	14
Gross weight (kg)	13	17
Load qty. 40HQ	970	607



\*Dimensions (mm)

Model	Capacity(L)	A	B	C
ES15V-Q1/Q2(R)	15	327	403	330
ES30V-Q1(R)	25	383	477	388



Cute

Electric Water Heater

ES10V-Q1/Q2(R)  
Plastic shell



Corrosion Proof



Heat Loss Proof



Water Proof



8 Bars Rated Pressure



Incoloy 800 HE



Shock Proof



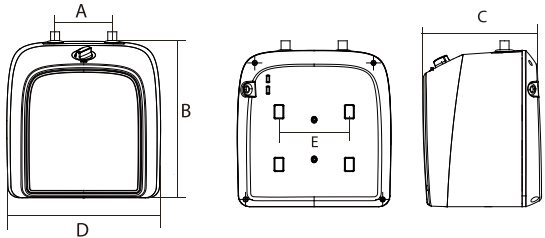
Over-heat Proof



Over-pressure Proof



Model	ES10V-Q1/Q2(R)
Installation type	Above sink/Under sink
Control method	Mechanical
Tank volume (L)	10
Rated voltage (V) / Frequence (Hz)	230/50
Rated power (kW)	1.5
Rated temperature (°C)	75
Rated pressure (Bar)	7.5
Tap water pressure (Bar)	≥0.5
Water-proof grade	IPX 4
Product dimensions H/W/D (mm)	350 / 350 / 270
Packing dimensions H/W/D (mm)	462 / 416 / 336
Net weight (kg)	8
Gross weight (kg)	10
Load qty. 40HQ	1053



\*Dimensions (mm)

Model	Capacity(L)	A	B	C	D	E
ES10V-Q1/Q2(R)	10	100	350	270	350	160

# Haier



## Haier Water Heater



### ADDRESS

No.1 Haier Road, Qingdao 266101 P.R. China


### CONTACTS

Mr. Han Xingzai

Tel: +86 532 8893 2607

Email:hanxz@haier.com

Website:www.haier.com

 The specifications, designs and information in this brochure are subject to the actual products.  
Haier reserves the right to make changes without any notice.



## Shock Proof Water Heater





Vertical

Electric Water Heater

## ES30/50/80/100V-A3

Plastic shell



Fluctuation  
Voltage Proof



Heat  
Loss Proof



Water Proof



8 Bars Rated  
Pressure



Incoloy  
800 HE



Durable  
& Reliable



Over-heat  
Proof

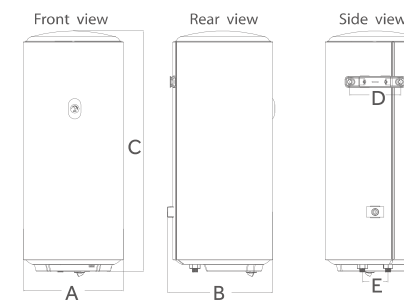


Shock Proof

NEW



Model	ES30V-A3	ES50V-A3	ES80V-A3	ES100V-A3
Installation method	vertical	vertical	vertical	vertical
Control method	mechanical	mechanical	mechanical	mechanical
Capacity(L)	30	50	80	100
Rated voltage(V)	220-240	220-240	220-240	220-240
Rated frequency(Hz)	50	50	50	50
Rated power(KW)	1.5	1.5	1.5	1.5
Rated temperature(°C)	75	75	75	75
Rated pressure (MPa)	0.8	0.8	0.8	0.8
Tap water pressure(MPa)	≥0.05	≥0.05	≥0.05	≥0.05
Water-proof grade	IPX 4	IPX 4	IPX 4	IPX 4
Product dimensions	390/400/447	390/400/650	390/400/930	390/400/1160
Packing dimensions	459/475/486	459/475/666	459/475/986	459/475/1202
Net weight (kg)	12	18	24	30
Gross weight (kg)	14	21	27	33
Loading quantity (40HQ)	610	473	314	266



Model	Volume (L)	A	B	C	D
ES30V-A3	30	390	400	447	100
ES50V-A3	50	390	400	650	100
ES80V-A3	80	390	400	930	100
ES100V-A3	100	390	400	1160	100