

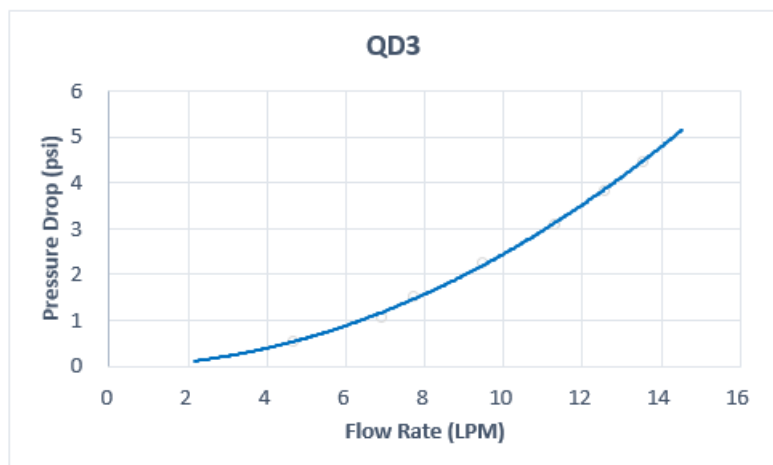
QD3 Female Quick Disconnect No-Spill Coupling, Compression for 10mm x 16mm (3/8in x 5/8in)

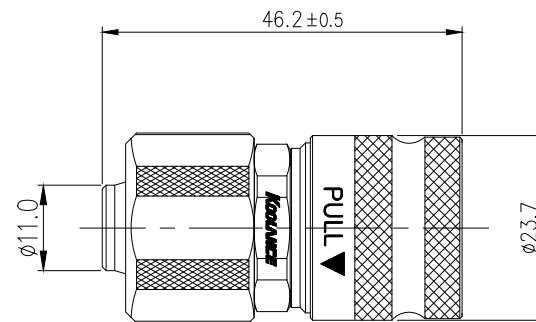
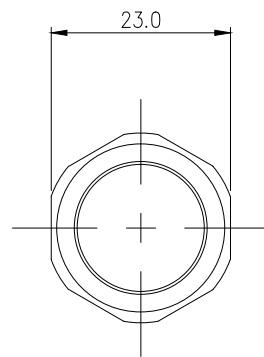


Koolance patented quick disconnect no-spill coupling with automatic shutoff. 10mm (3/8in) ID, 16mm (5/8in) OD female straight connection with compression fitting. It will only fit a Koolance QD3 male quick disconnect.


After pulling the ring on the female QDC side, the quick-disconnect fittings will separate. Liquid on both sides will be automatically obstructed with approximately 0.2ml freed. Coolant volume lost upon disconnection will rise with internal pressure higher than 0.5kgf/cm² (7psi).

General	
Weight	0.23 lb (0.10 kg)
Materials	Brass, Nickel Plating, Stainless Steel, EPDM
Max Pressure Tolerance @ 25° C	8kgf/cm ² (113.8psi)
Max Temp. Operating Tolerance	100° C (212° F)





REV	DATE	CONTENTS	REVD BY	CHKD BY	APPD BY
REVISION					

NO.		DISCRIPTION			MATER'L		QUANTITY	REMARKS
		DECIMAL PLACES	INCHES	MILLIMETRES	UNIT	MM	ITEM QD3	
		.XXX .XX .X	±.005 ±.010 ±.020	±0.1 ±0.3 ±0.5	SCALE	N/S	TITLE QD3-FS10X16 QD3-FS10X16-BK	
		ANGULAR DIMENSIONS			3RD ANGLE		CODE NO.	
DATE	BY	BY	BY	APPRO BY	XX" XX.X"		±0.5" ±0.1"	
	SONG				SURFACE ROUGHNESS		SURFACE SURFACE .63 1.6	
							DWG. NO.	PAGE