



## ExpertBook B9 | B9400

*The world's lightest 14" business laptop<sup>1</sup>*

### Elite lightness for the exceptional

Take charge of the business world with ASUS ExpertBook B9. Its sleek, minimalist and precision-machined chassis pushes the limits of lightness for ultimate portability, with a magnesium alloy design that delivers luxury and toughness without equal, while giving it a toughness that has no equal. And it's built for serious travel with its amazing up to 16-hour battery life and enterprise-grade security. Extremely portable, powerful and tough, it's your ideal partner in the corporate world, and perfect for business executives.



Ultra thin and light



All-day battery life



Enterprise-grade security



US military grade



Up to 12<sup>th</sup> Gen CPU



Dual SSDs  
Support RAID 0, 1

### Ultimate portability for business elites

- **The world's lightest 14-inch business laptop\***
- **880g (33Whr) / 1005g (66Whr)**
- 14.9mm thin
- **Thin bezel 4mm**, 94% screen-to-body ratio
- **Up to 16 hours battery life**

### Enterprise-grade durability and security

- **US Military Grade** durability to cope with business rigors on the road
- **Proximity sensor** support
- IR camera for facial login, Nano Kensington lock, TPM 2.0 chip\*, fingerprint sensor, NFC\*, webcam shield

### Exceptional performance

- Up to **12th Gen Intel Core™ i7 vPro processor** with **Iris X<sup>e</sup> graphic**
- **All-day battery life**, support **fast charging**
- Dual SSD, support **Raid 0, Raid 1**
- Full IO ports with **Thunderbolt™ 4**, HDMI, USB type-A, RJ45 via micro LAN port
- Superfast **Wi-Fi 6E** and ASUS Wi-Fi Master Premium

### Business Focus Design

- **Wi-Fi 6E & ASUS WiFi Master** provides seamless connection
- **AI noise cancellation technology** for quality online meetings
- Quad far-field microphones
- **Harman/Kardon** certified speakers, **Dolby Atmos**
- **AI Camera**
- ASUS exclusive NumberPad
- Alexa with built-in light bar

\*Optional specification

1. As of Jan. 7th, 2022. Based on internal ASUS market analysis comparing the size and weight of ExpertBook B9 to competitor products from vendors including LG, HP, Dell, and Lenovo. Actual weight may vary by specifications.

### Warranty and Support



**3-Year global warranty**  
100% free of charge, with no hidden costs.



**Pick Up & Return service**  
Enjoy a door-to-door service including pick up, repair, and return.



**MyASUS App**  
Contact customer service, view repair status, read product guides and more.

# SPECIFICATION



Model	B9400CBA
Operating system	Windows 11 Pro(ASUS recommends Windows 11 Pro) Windows 11 Home
CPU	Intel® Core™ i5-1235U Processor 1.3 GHz (12M Cache, up to 4.4 GHz, 10 cores) Intel® Core™ i7-1255U Processor 1.7 GHz (12M Cache, up to 4.7 GHz, 10 cores) Intel® Core™ i5-1245U Processor 1.6 GHz (12M Cache, up to 4.4 GHz, 10 cores) Intel® Core™ i7-1265U Processor 1.8 GHz (12M Cache, up to 4.8 GHz, 10 cores)
GPU	Intel® Iris Xe graphics
Memory	Up to 32 GB LPDDR5 5200 MHz Onboard: 8 GB/16 GB/32 GB LPDDR5 5200 MHz
Storage	2 x M.2 SSD, up to 4TB PCIe® 4.0 SSD 512 GB/1 TB/2TB M.2 PCIe®4.0 Value SSD 512 GB/1 TB/2TB M.2 PCIe®4.0 Performance SSD
Display	14" FHD (1920 x 1080), IPS, 16:9, wide view, anti-glare, 400 nits, 72% NTSC
Stylus	Not available
I/O ports	1 x USB 3.2 Gen 2 Type-A 2 x Thunderbolt™ 4 Type-C (supports 4K display, USB PD3.0) 1 x HDMI 2.0 1 x 3.5 mm combo audio jack 1 x Nano Kensington® lock slot
Video camera	720 P HD IR camera, Webcam Shield
Wireless	Wireless on board Dual-band 2x2 WiFi 6E (802.11ax) + Bluetooth® 5 2 x speaker with harman/kardon certified 4 x multi-array microphone
Audio	ASUS two-way AI Noise-Canceling Technology Smart amp technology Dolby Atmos
Weight	33 Wh battery: starting at 0.88kg 66 Wh battery: starting at 1.005 kg
Dimensions (WxDxH)	32.0 x 20.3 x 1.49 cm
Battery	33 Wh, 2-cell, Li-Polymer; 66 Wh, 4-cell, Li-polymer
Security	Nano Kensington® lock slot, fingerprint sensor, Webcam Shield, TPM 2.0 (optional), NFC login*, webcam shield
Keyboard and touchpad	Full-size keyboard with 1.5 mm key travel; backlit; spill-resistant to 330cc* *Quantity used during testing, with duration of 3 minutes
NumberPad	Yes
Featured software	ASUS Control Center (sold separately), ASUS Business Manager, MyASUS
AC adapter	USB Type-C®, 65 W; Output: 20 V DC, 3.25 A; Input: 100~240 V AC 50/60 Hz universal
Energy efficiency compliance	Energy star, EPEAT

Disclaimer :  
1. ASUS Expert Series Service Package may differ from country to country. We recommend that you check with your local dealers for the specifications of the products available in your country.

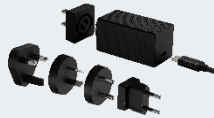
## Recommended Accessories



ASUS SimPro dock 2



ZenScreen MB165B



65W USB-C Ultra Mini  
Universal Adapter